

MDB Repair Tool

1. Introduction

Author: Frank Kusluski

Updated: 5/30/12

MDB Repair Tool is an easy-to-use, powerful MS Access Utility for quickly fixing corrupt databases, comparing database structures, and recreating lost or corrupted indexes and queries.

2. Fixing a Corrupt Database

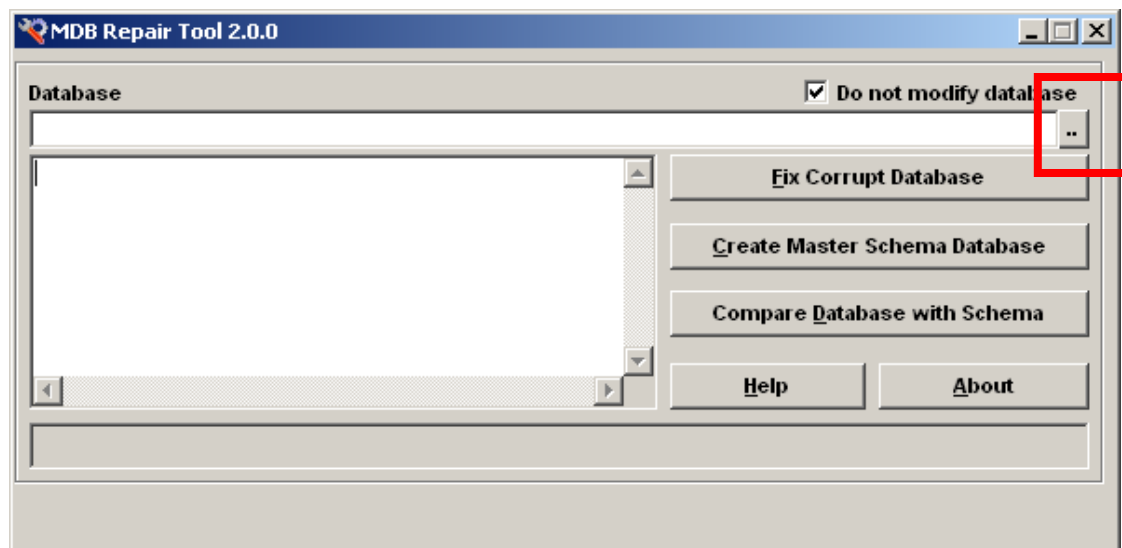
MDB Repair Tool uses complex algorithms to fix most corrupted databases. Before attempting to fix a corrupted database you should manually delete corrupt and duplicate records. Corrupt records usually contain a series of repeating ### symbols and are located in the first few records of a table. Duplicate records can be found by building a query using the primary key fields. For example, if the primary key fields in table Customer are CustID and CustName then the query for finding duplicate records would be:

```
SELECT CustID, CustName FROM Customer GROUP BY CustID, CustName HAVING COUNT(*) > 1
```

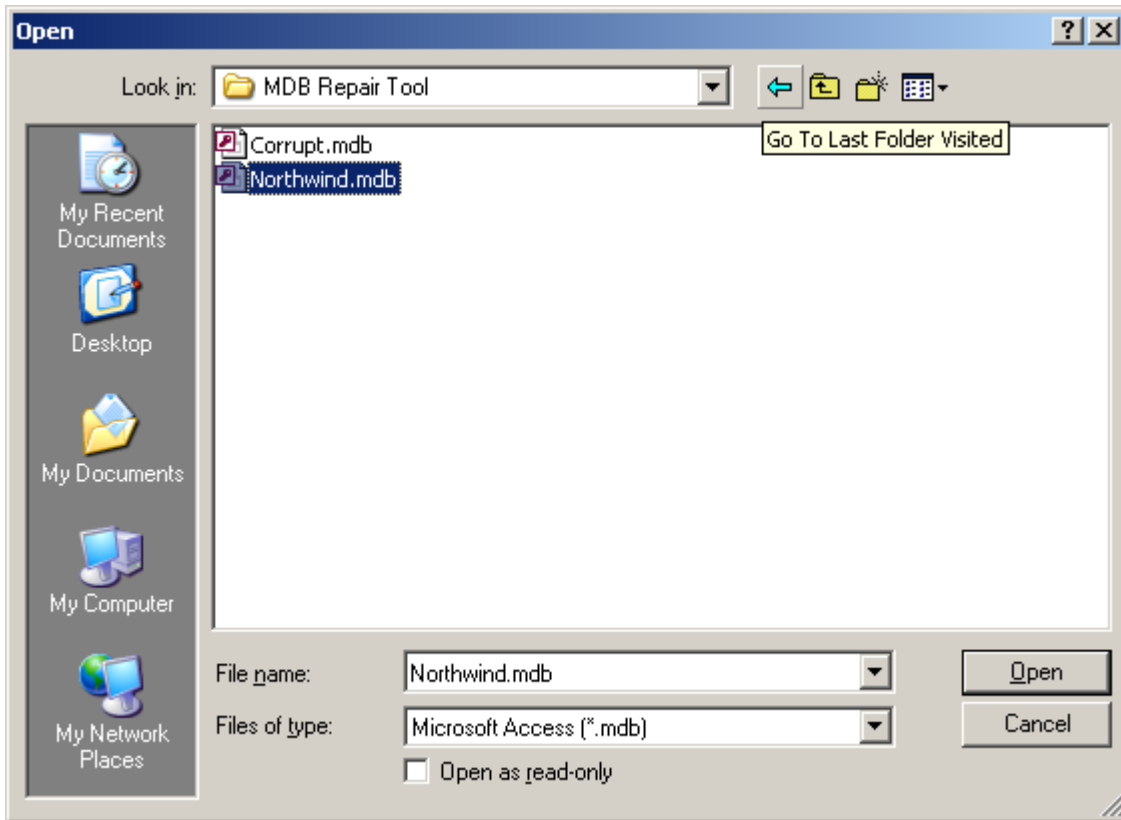
3. Creating a Master Schema Database

A Master Schema Database is a database which contains database structure information for a specific database. The information stored consists of tables, fields, indexes, and queries. You may ask yourself “why do I need such a database”? If your database becomes corrupted and loses critical indexes or queries your application will most likely fail. With a Master Schema Database in place you can use MDB Repair Tool to alert you of which tables, fields, indexes, and queries are corrupted or missing. Optionally, you can even recreate the missing indexes and queries with just a few mouse clicks!

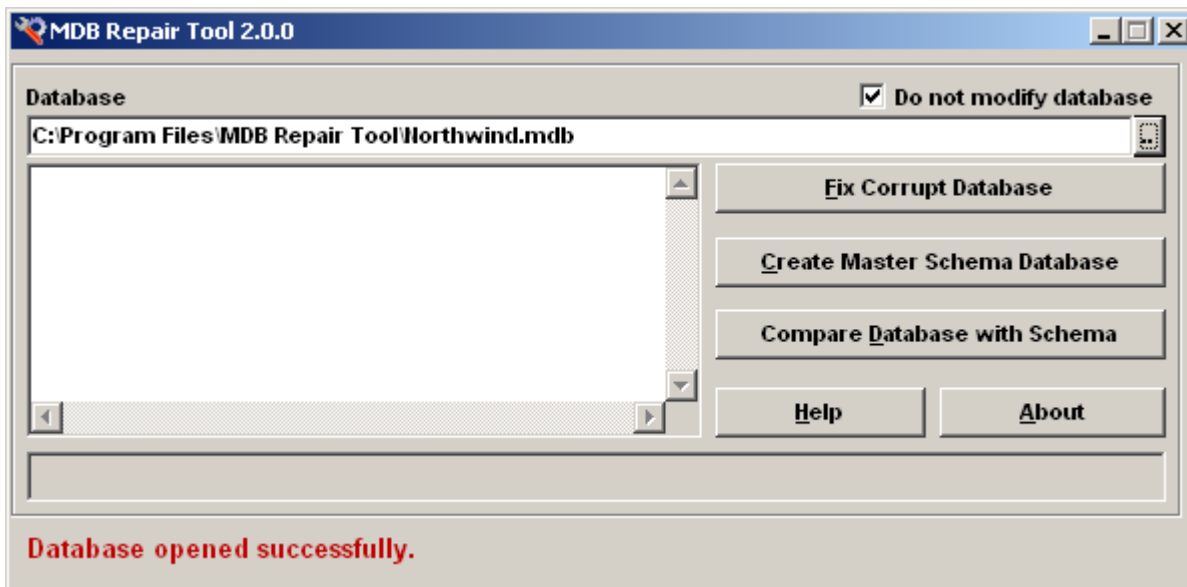
To demonstrate click on this button to open the File Open Dialog Screen.



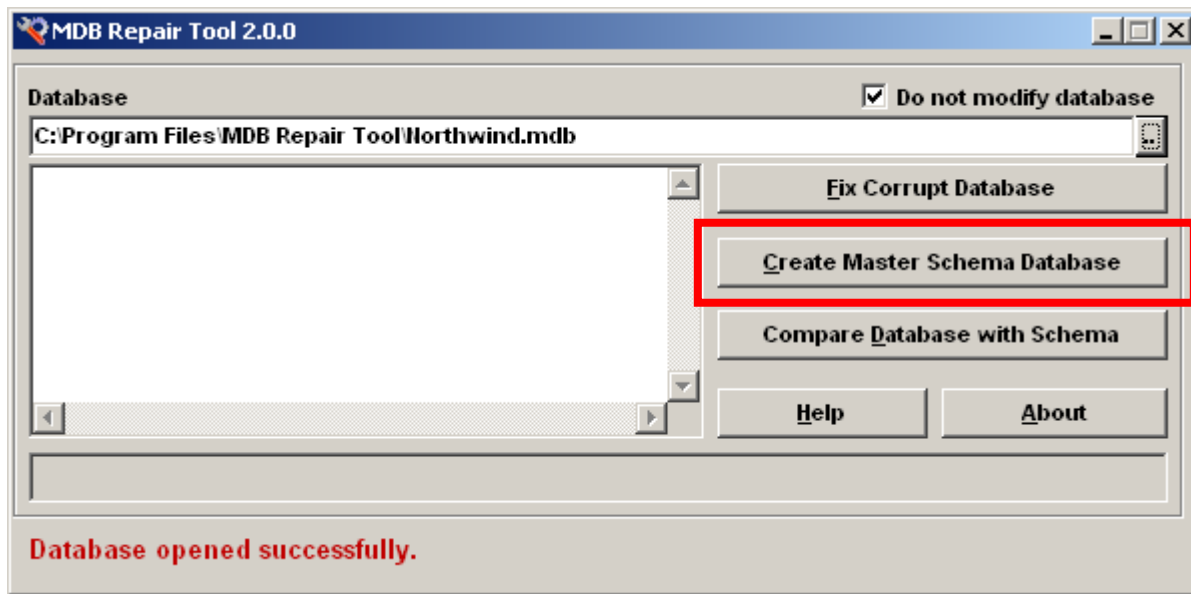
Select Access Database C:\Program Files\MDB Repair Tool\Northwind.mdb and click the Open button.



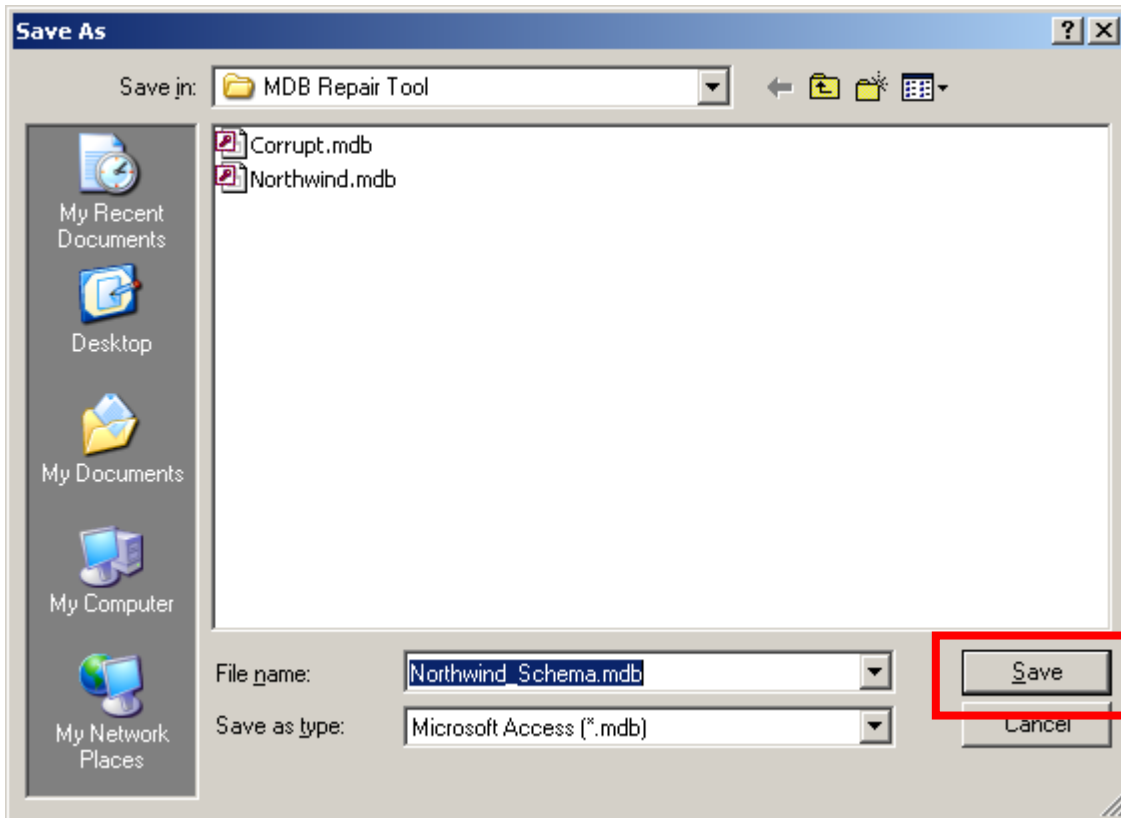
You will see confirmation message at the bottom of the screen if the database was opened successfully.



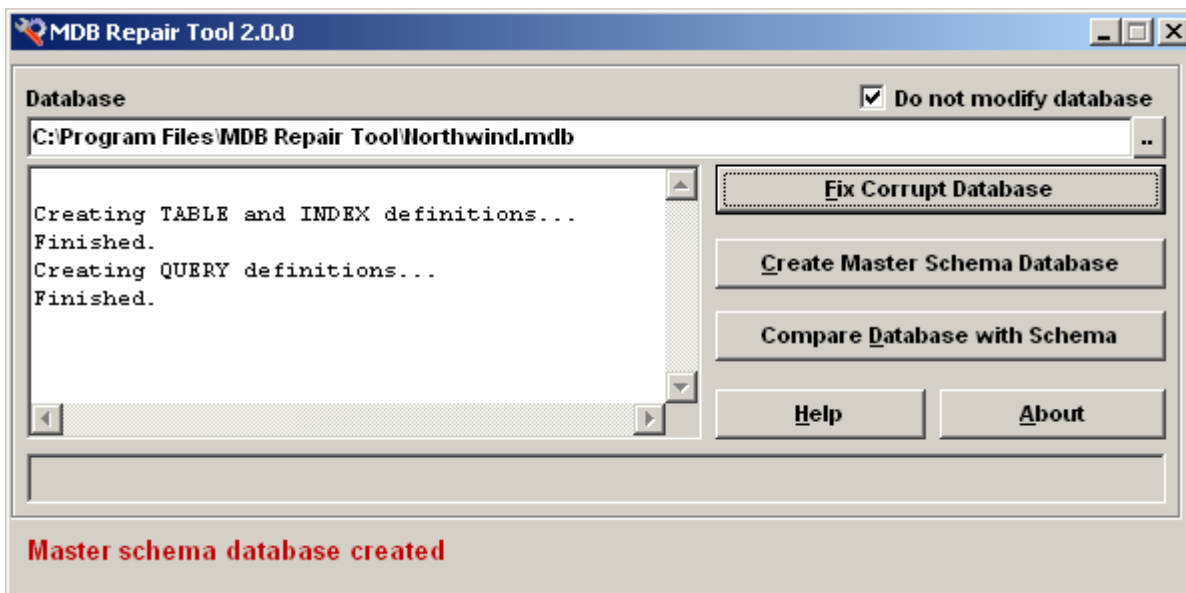
To create a database containing database structure information (fields, indexes, queries) for NORTHWIND.MDB click button “Create Master Schema Database”.



The default name of the schema database is the selected database name with “_schema.mdb” appended on the end. Click the Save button to proceed.



The Master Schema Database will be created. When complete the screen should look like this.

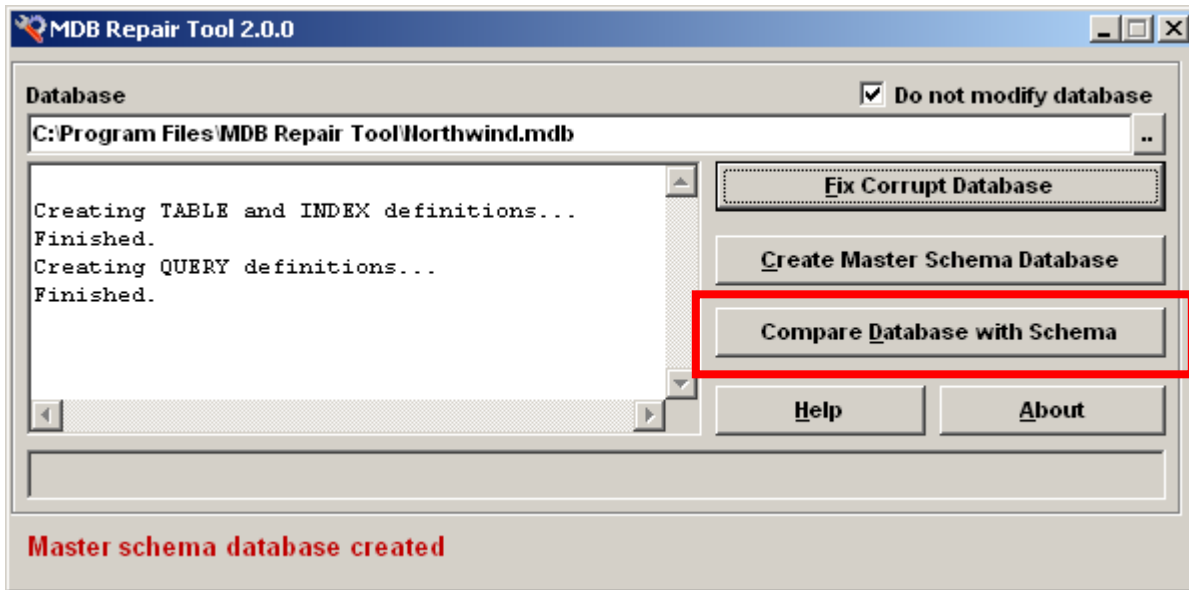


4. Comparing a Database with Schema

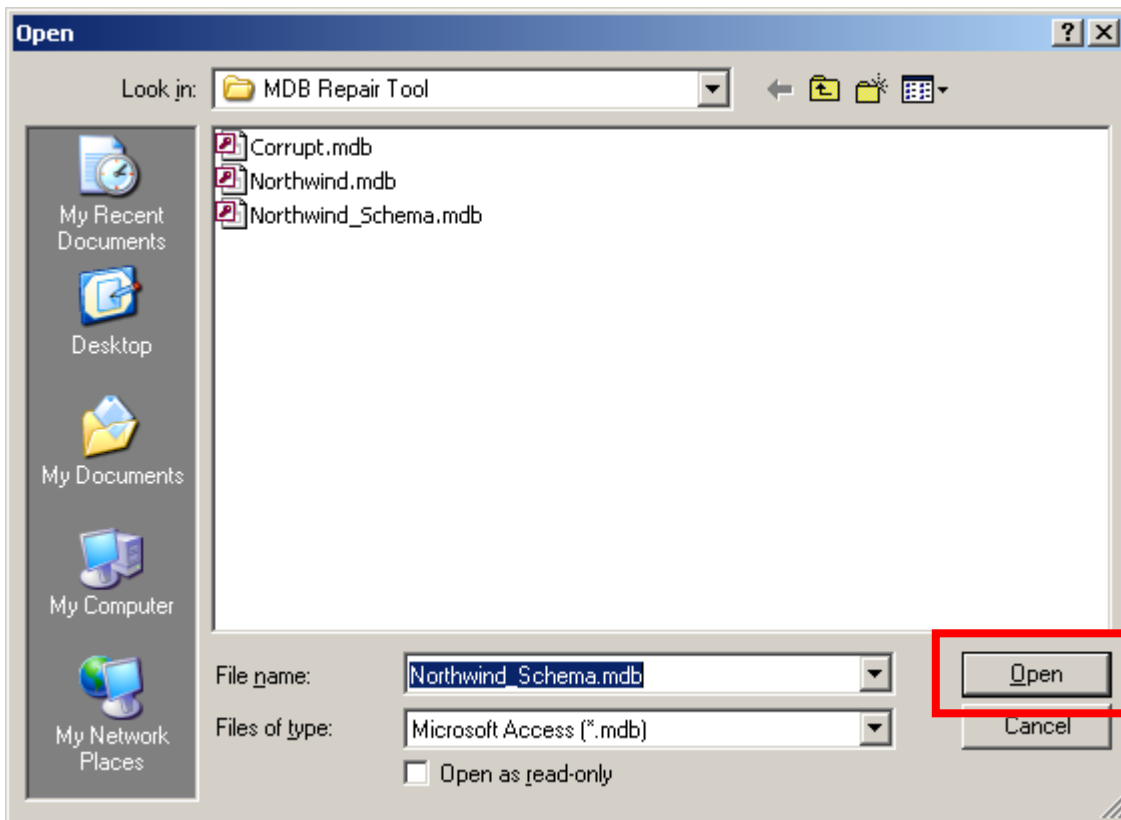
Now that you have created a Master Schema Database you are ready to test the real power of MDB Repair Tool! In the following steps you will compare NORTHWIND.MDB with CORRUPT.MDB and learn of the differences in the databases. File CORRUPT.MDB is a copy of NORTHWIND.MDB but it has several missing indexes and all of the queries are missing.

Select database C:\Program Files\MDB Repair Tool\Northwind.mdb and click button "Compare Database with

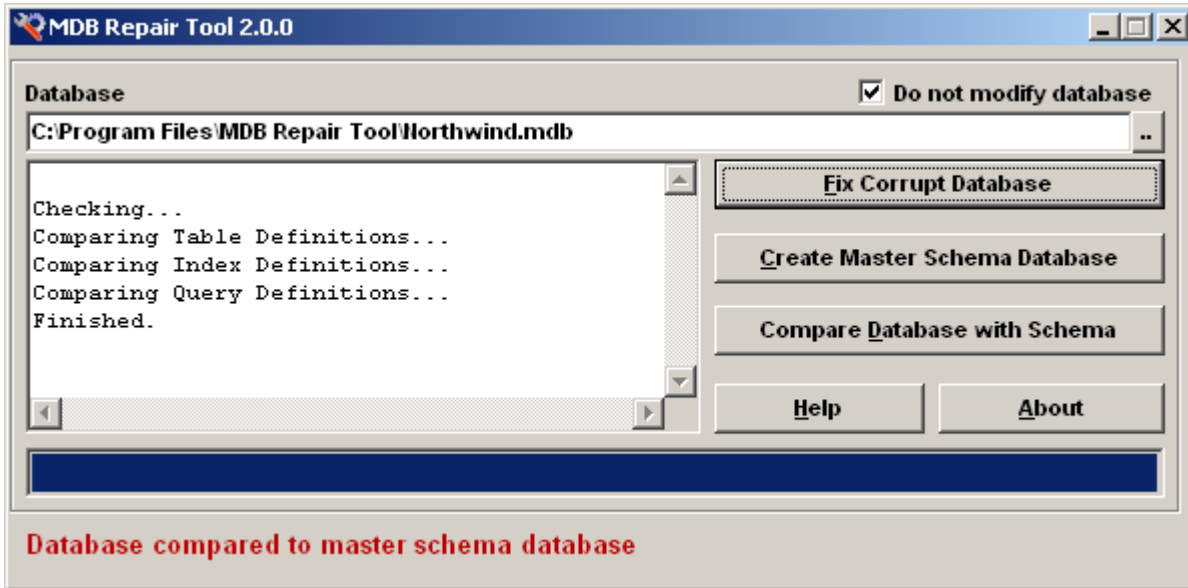
Schema”



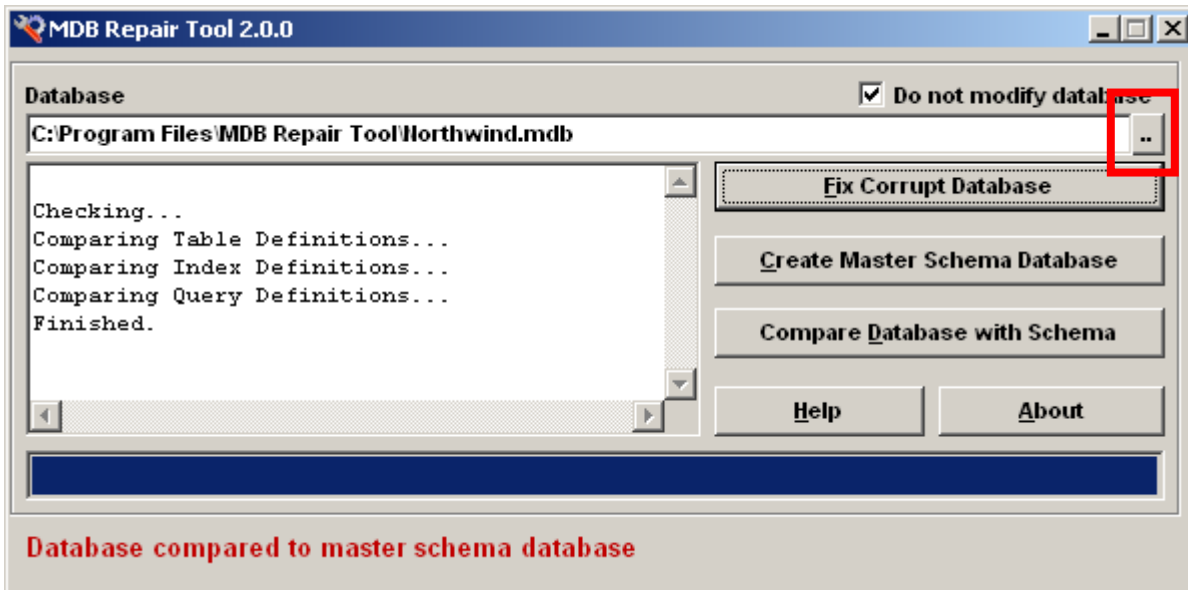
From the File Open Dialog Screen select file C:\Program Files\MDB Repair Tool\Northwind_Schema.mdb and click the Open button. Wait for processing to complete.



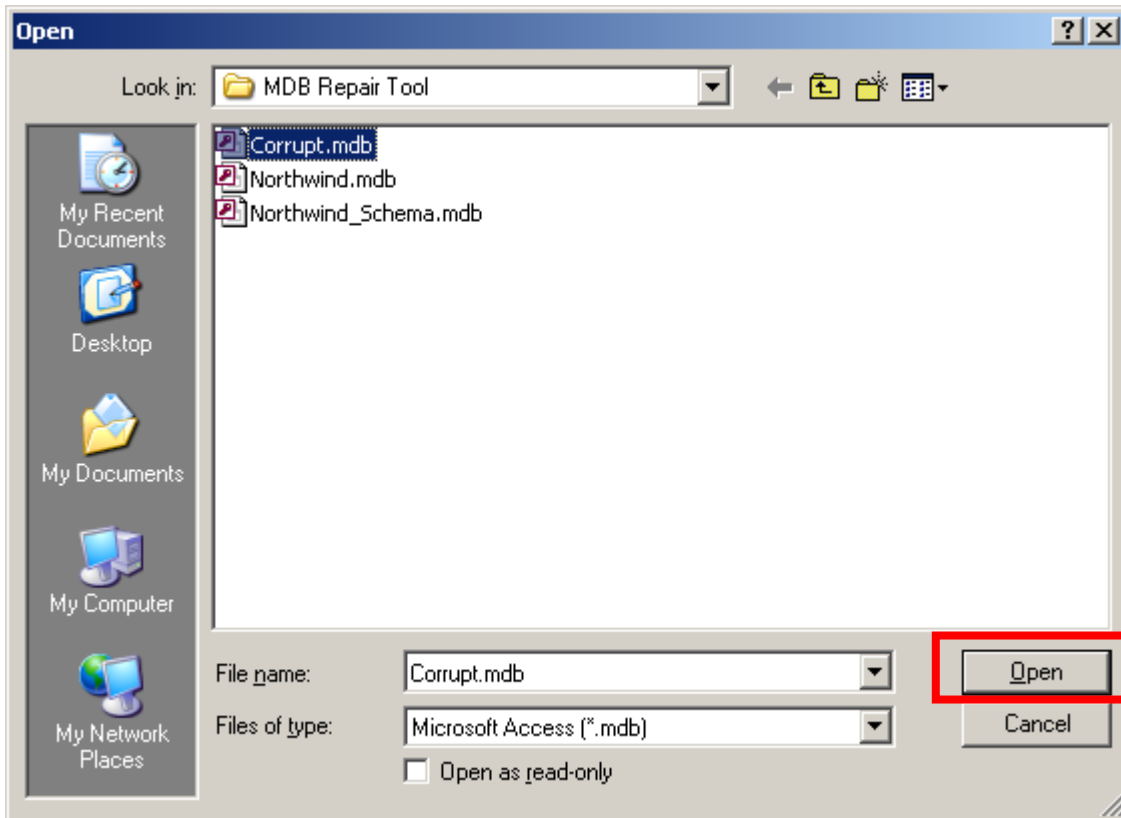
Since NORTHWIND.MDB has no missing indexes or queries no differences are found.



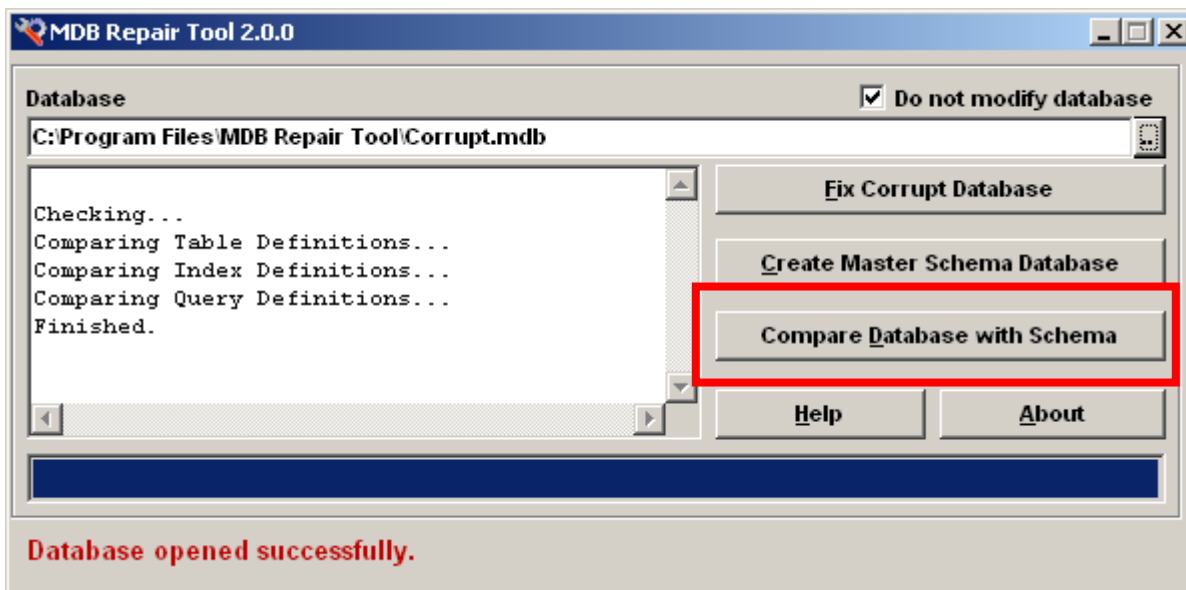
Now we will check CORRUPT.MDB for missing tables, fields, indexes, and queries. Click this button to select a database.



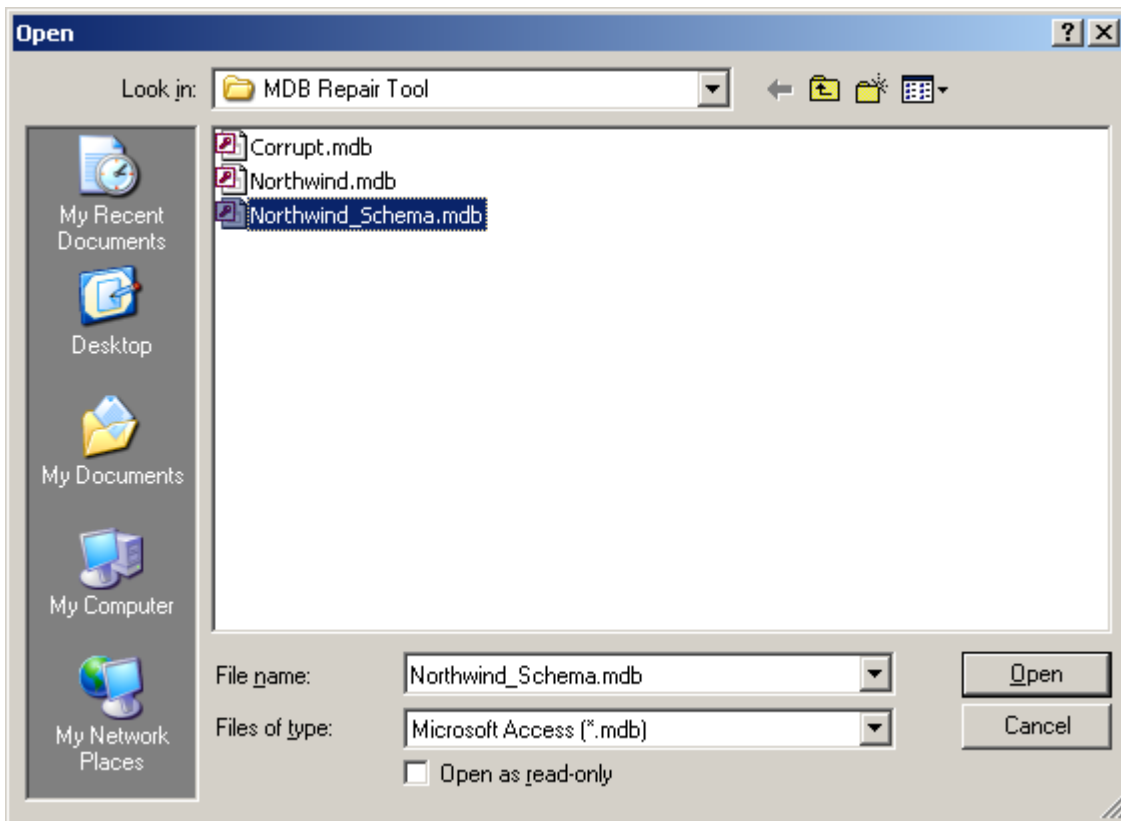
Select file C:\Program Files\MDB Repair Tool\Corrupt.mdb and click the Open button.



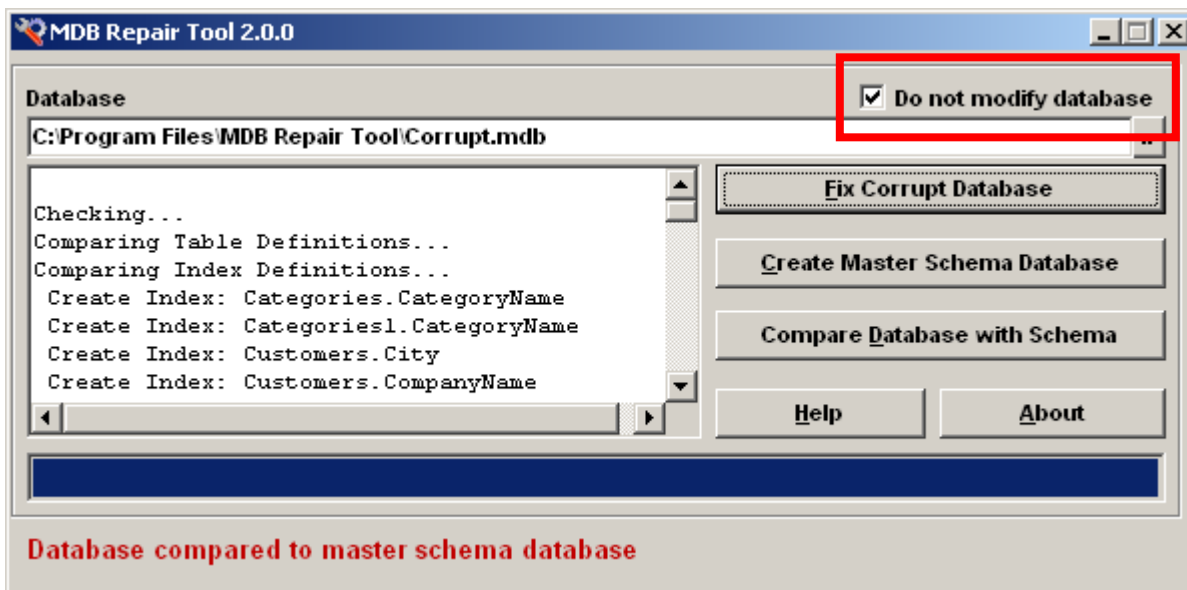
Next, click button “Compare Database with Schema”.



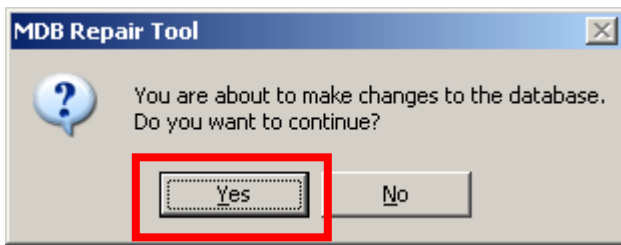
From the File Open Dialog Screen select file C:\Program Files\MDB Repair Tool\Northwind_Schema.mdb and click the Open button. Wait for processing to complete.



Yikes! Several indexes and queries are missing from CORRUPT.MDB. However, since the checkbox “Do not modify database” is checked no changes were made to CORRUPT.MDB. Uncheck this checkbox.

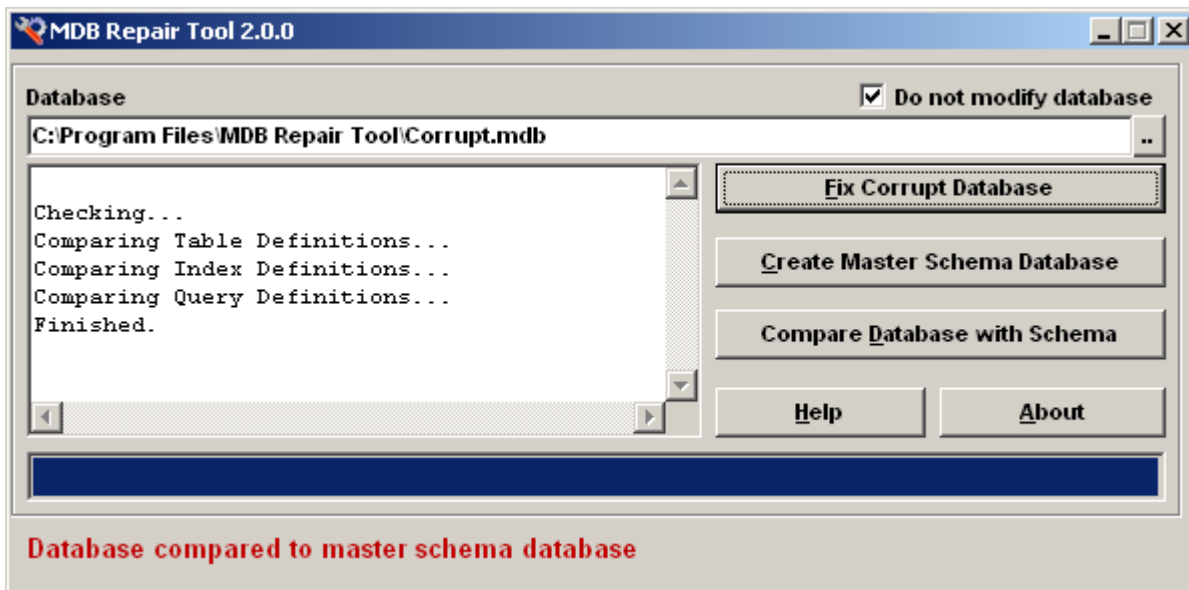


Click on button “Compare Database with Schema”. A warning message will appear. Click the Yes button to continue.



From the File Open Dialog Screen select file C:\Program Files\MDB Repair Tool\Northwind_Schema.mdb and click the Open button. Wait for processing to complete.

The structures of databases NORTHWIND.MDB and CORRUPT.MDB should now be identical. To verify this check the checkbox “Do not modify database” and run “Compare Database with Schema” once again. The screen should look like so. Database CORRUPT.MDB now has the same indexes and queries as database NORTHWIND.MDB.



By now you must realize how much time can be saved by using MDB Repair Tool. **Say goodbye to hours of searching table by table for missing indexes! Say goodbye to hours of searching for missing queries! Fix corrupt databases with just a few mouse clicks!**

5. Running MDB Repair Tool from the Command Prompt

MDB Repair Tool may be run from the Command Prompt using four different modes:

- a. Create Master Schema Database then exit. Pass the database to create the schema from, the schema database to create, and a -1.

Example:

```
"C:\Program Files\MDB Repair Tool\mdbrt.exe" -C:\Program Files\MDB Repair Tool\northwind.mdb -  
C:\Program Files\MDB Repair Tool\northwind_schema.mdb -1
```

- b. Compare Database with Schema then exit. Pass the database to compare the schema with, the schema database, and a -2.

Example:

```
"C:\Program Files\MDB Repair Tool\mdbrt.exe" -C:\Program Files\MDB Repair Tool\corrupt.mdb -  
C:\Program Files\MDB Repair Tool\northwind_schema.mdb -2
```

- c. Create Master Schema Database and do not exit. . Pass the database to create the schema from, the schema database to create, and a -3.

Example:

```
"C:\Program Files\MDB Repair Tool\mdbrt.exe" -C:\Program Files\MDB Repair Tool\northwind.mdb -  
C:\Program Files\MDB Repair Tool\northwind_schema.mdb -3
```

- d. Compare Database with Schema and do not exit. . Pass the database to compare the schema with, the schema database, and a -4.

Example:

```
"C:\Program Files\MDB Repair Tool\mdbrt.exe" -C:\Program Files\MDB Repair Tool\corrupt.mdb -  
C:\Program Files\MDB Repair Tool\northwind_schema.mdb -4
```

If your database is password-protected you must pass a fourth value.

Example:

```
"C:\Program Files\MDB Repair Tool\mdbrt.exe" -C:\Program Files\MDB Repair Tool\corrupt.mdb -  
C:\Program Files\MDB Repair Tool\northwind_schema.mdb -4 -password
```

If your application uses an Access Database you may want to run MDB Repair Tool from within your application to compare your database with a schema database to alert users if the database is missing fields, tables, indexes or queries. A file named RESULTS.TXT will be created in the same folder as the application if the database is missing information. Here is some sample Visual Basic 6 code which compares a database with schema and displays a message box if any missing information is found:

```
Dim sCommand As String
sCommand = Chr(34) & "C:\Program Files\MDB Repair Tool\mdbrt.exe" & Chr(34) & " -C:\Program
Files\MDB Repair Tool\northwind.mdb -C:\Program Files\MDB Repair Tool\northwind_schema.mdb -2"
Shell sCommand, vbNormalFocus
If FileLen(App.Path & "\RESULTS.TXT") Then
    MsgBox "Database is missing information."
End If
```

You can also run MDB Repair Tool from Window's Run feature. To do so click the Start Button, select Run..., then type in the command line and click the OK button.

