

# AutoCAD Drawing Viewer

by SkySof Software Inc.

Download: <http://www.getfilez.com/dwgview.zip>

## 1. Introduction

With AutoCAD Drawing Viewer you view important information in AutoCAD drawing files without owning a copy of AutoCAD! Features include: view block attribute values, view single and multiple line text, view layer information, view and open drawings, save drawing file as a BMP file, print drawings, etc. AutoCAD Drawing Viewer works with any AutoCAD drawing version and does not require AutoCAD. AutoCAD Drawing Viewer requires Microsoft Data Access Components (MDAC). This software is free and available for download from the internet at <http://msdn.microsoft.com/data/mdac/downloads/default.aspx> After installing MDAC you must unload AutoCAD Drawing Viewer then reload.

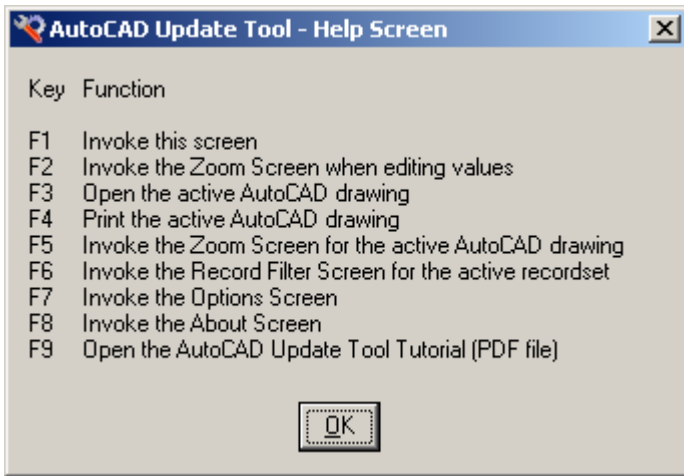
## 2. Updating block attribute values in an AutoCAD drawing file

Select drawing file C:\Program Files\AutoCAD Drawing Viewer\ATTEXT.DWG. The drawing will display in the window pane on the right and the data grid will fill with drawing data. Enclosed in the red rectangle is information about the drawing: version, date/time created, and file size in bytes. To the right of this is a button to open the drawing with your designated application for AutoCAD drawing files and a button for printing the drawing.

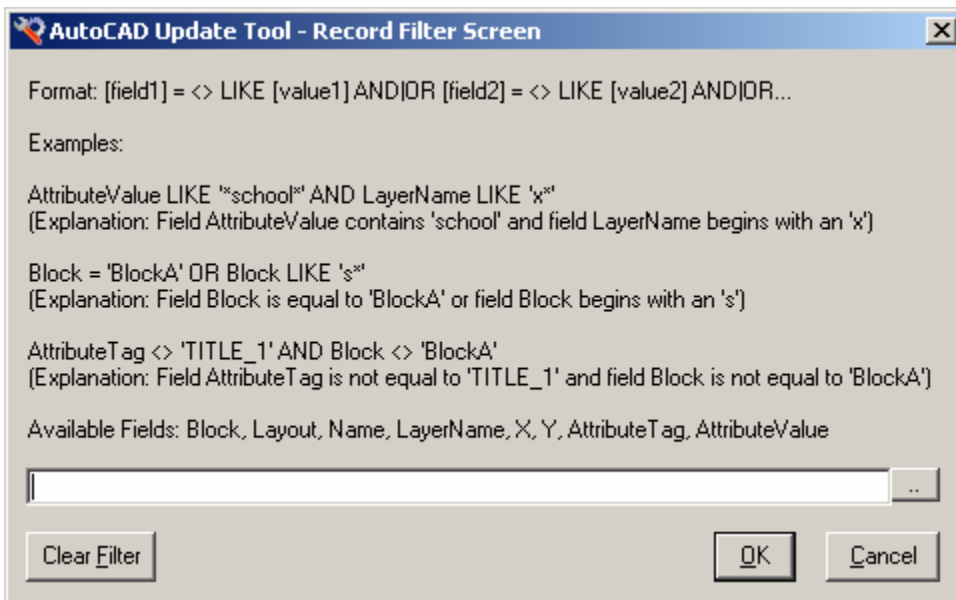
Block	Layout	Name	LayerName	X	Y	AttributeTag	*AttributeValue
*MODEL	Model	D00005C	XT	662.32	761.5	TITLE_1	This is title 1.
*MODEL	Model	D00005C	XT	662.32	761.5	TITLE_2	This is title 2.
*MODEL	Model	D00005C	XT	662.32	761.5	CUSTOMER'S_NAME	ABC Computer Inc.
*MODEL	Model	D00005C	XT	662.32	761.5	PRJ_ENG	John Doe
*MODEL	Model	D00005C	XT	662.32	761.5	DRAWN_BY	Bob Brown
*MODEL	Model	D00005C	XT	662.32	761.5	DATE	8/9/99
*MODEL	Model	D00005C	XT	662.32	761.5	SCALE	3/16"=1'-0"

Press the F1 key to display the help screen. This screen displays features of the application and the function keys associated with them. One very useful key is F6 which will open the drawing in full screen mode allowing you to

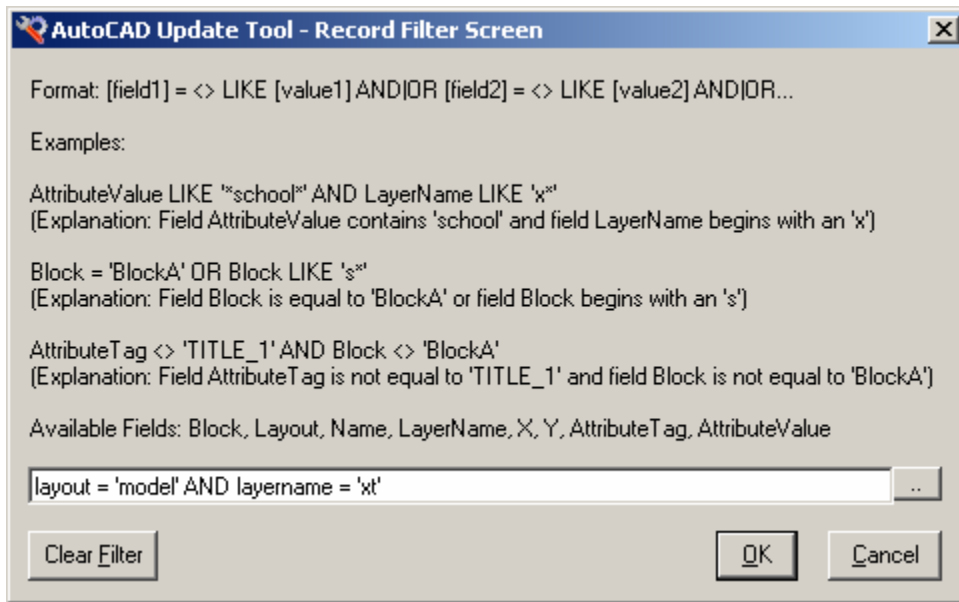
see the drawings data more clearly. Right-clicking anywhere on the drawing calls up a popup menu which displays menu items for zooming the drawing.



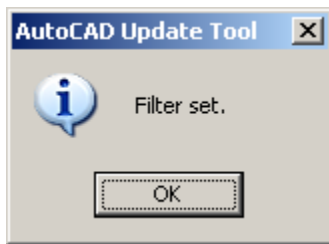
Close the Help Screen by clicking the OK button and press the F6 key to call the Record Filter Screen. You will set a filter on the drawing data to “drill down” to locate specific data.



To locate records with a layout of 'Model' and a layer name of 'XT' type in the following filter: **layout = 'model' AND layername = 'xt'** Note that field names and values are not case sensitive.



Press the OK button to set the filter. You should see this screen. Press the OK button.



The main screen should now contain only those records which matched the filter criteria. Note that before there were 52 records, now there are only 13.

Block	Layout	Name	LayerName	X	Y	AttributeTag	*Attribute\Value
*MODEL	Model	D000050	XT	662.34	761.5	TITLE_1	This is title 1.
*MODEL	Model	D000050	XT	662.34	761.5	TITLE_2	This is title 2.
*MODEL	Model	D000050	XT	662.34	761.5	CUSTOMER'S_NAME	ABC Computer Inc.
*MODEL	Model	D000050	XT	662.34	761.5	PRJ_ENG	John Doe
*MODEL	Model	D000050	XT	662.34	761.5	DRAWN_BY	Bob Brown
*MODEL	Model	D000050	XT	662.34	761.5	DATE	8/9/99
*MODEL	Model	D000050	XT	662.34	761.5	SCALE	3/16"=1'-0"

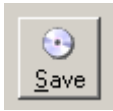
Find What:      Replace With:      1 of 13

Scroll to record 13 and you'll see "Smith" in field AttributeValue. The asterisk (\*) in the field name indicates that the values in this field can be edited.

Block	Layout	Name	LayerName	X	Y	AttributeTag	*Attribute\Value
*MODEL	Model	D000050	XT	662.34	761.5	SCALE	3/16"=1'-0"
*MODEL	Model	D000050	XT	662.34	761.5	JOB_NO.	12345
*MODEL	Model	D000050	XT	662.34	761.5	DWG_NO	1
*MODEL	Model	D000050	XT	662.34	761.5	RL	A
*MODEL	Model	D000050	XT	662.34	761.5	REV_DATE	8/17/99
*MODEL	Model	D000050	XT	662.34	761.5	REV_DES	
*MODEL	Model	D000050	XT	662.34	761.5	RB	Smith

Find What:      Replace With:      13 of 13

Type in **Dan Jones** to replace Smith. Click the Save button on the lower left corner of the screen to save your change.



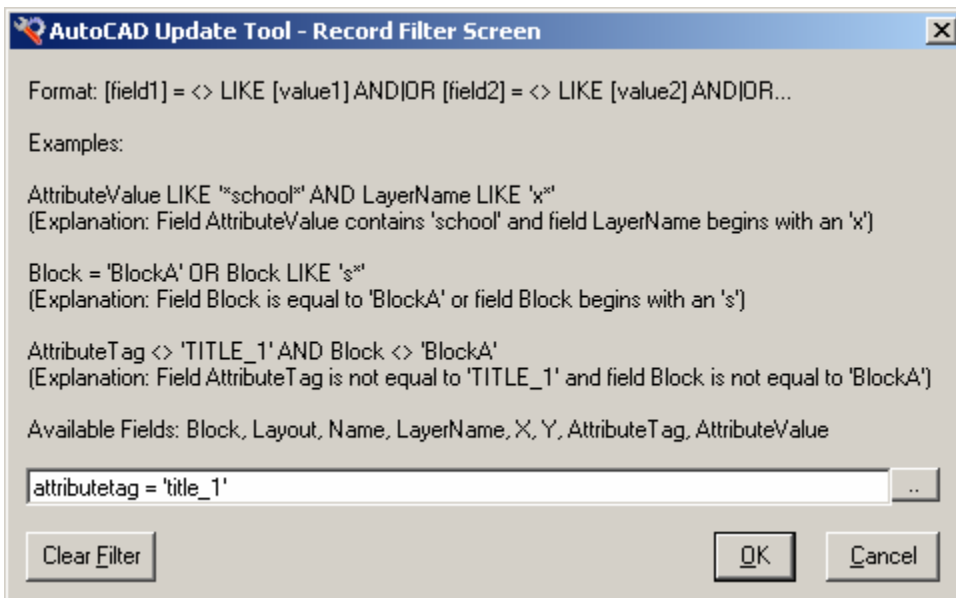
To ensure that the data was saved click on the drawing ATTEXT.DWG to reload the drawing data. To find Dan Jones type **Dan Jones** in the Find What text box and click the Find First button.



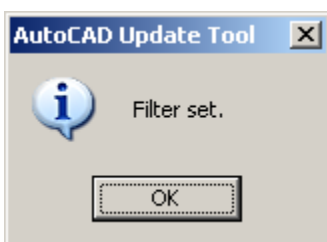
The record pointer should now be at record thirteen and Dan Jones should be in the AttributeValue field. The data was indeed saved.

Block	Layout	Name	LayerName	X	Y	AttributeTag	*AttributeValue
*MODEL	Model	D00005C	XT	662.3	761.5	SCALE	3/16"=1'-0"
*MODEL	Model	D00005C	XT	662.3	761.5	JOB_NO.	12345
*MODEL	Model	D00005C	XT	662.3	761.5	DWG_NO	1
*MODEL	Model	D00005C	XT	662.3	761.5	RL	A
*MODEL	Model	D00005C	XT	662.3	761.5	REV_DATE	8/17/99
*MODEL	Model	D00005C	XT	662.3	761.5	REV_DES	
*MODEL	Model	D00005C	XT	662.3	761.5	RB	Dan Jones

Now you will set each attribute value of "TITLE\_1" to "Hello World!". To do this we need to set another filter. Press the F6 key to open the Record Filter Screen and type in **attributetag = 'title\_1'** and press the OK button.



You should see this screen. Press the OK button.



In the data grid you should now see only 4 records. Note that the value of AttributeTag field is TITLE\_1.

	Block	Layout	Name	LayerName	X	Y	AttributeTag	*AttributeValue
▶	*MODEL	Model	D00005C	XT	662.33	761.51	TITLE_1	This is title 1.
	*MODEL	Model	D00005C	0	662.44	764.31	TITLE_1	My drawing.
	*PAPER	Layout1	D00005C	XU	0.0000	0.0000	TITLE_1	This is title 1.
	*PAPER	Layout1	D00005C	0	0.0711	4.9566	TITLE_1	This is title 1.

Find What  Replace With  1 of 4

At this point we could type in “Hello World!” three times for each value but it is much more efficient to perform a find and replace. To find all instances of “This is title 1.” and replace with “Hello World!” type **This is title 1.** in the Find What text box and type **Hello World!** in the Replace With text box.

Find What	<input type="text" value="This is title 1."/>	Replace With	<input type="text" value="Hello World!"/>
-----------	---	--------------	---

Click the Replace All button to find and replace every occurrence. The field values should contain the new values. Click the Save button to save your changes.

	Block	Layout	Name	LayerName	X	Y	AttributeTag	*AttributeValue
▶	*MODEL	Model	D00005C	XT	662.33	761.51	TITLE_1	Hello World!
	*MODEL	Model	D00005C	0	662.44	764.31	TITLE_1	My drawing.
	*PAPER	Layout1	D00005C	XU	0.0000	0.0000	TITLE_1	Hello World!
	*PAPER	Layout1	D00005C	0	0.0711	4.9566	TITLE_1	Hello World!

Besides finding and replacing all values by clicking the Replace All button you can also find and replace one value at a time Find Next and Replace buttons.

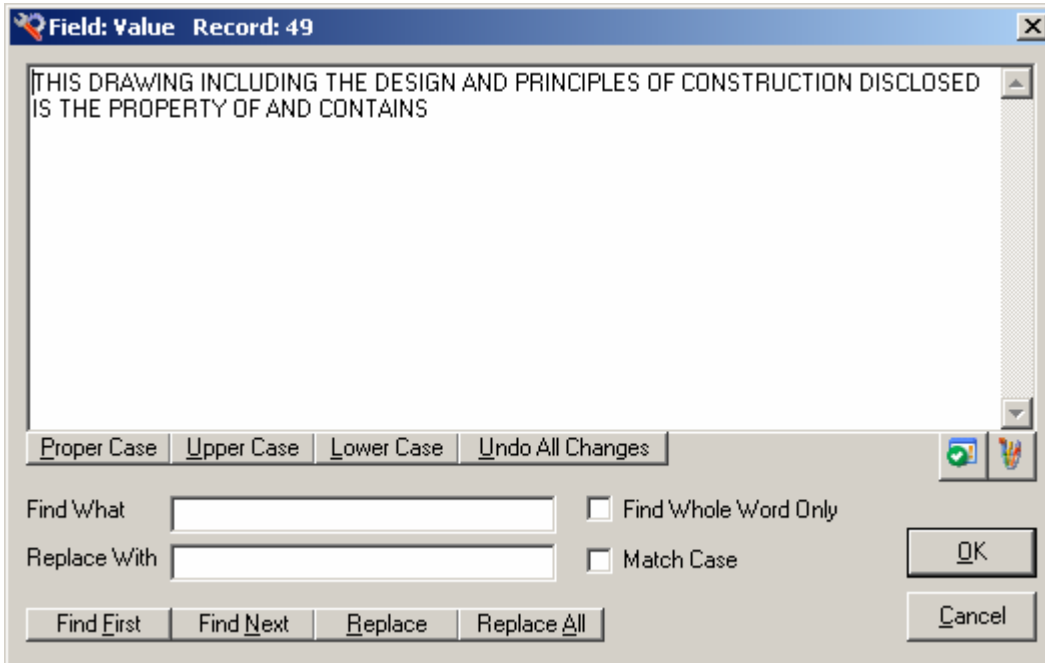
### 3. Updating single line text values in an AutoCAD drawing file

Select radio button “Single Line Text” from the Drawing Information group box. You should see single line text information in the data grid.

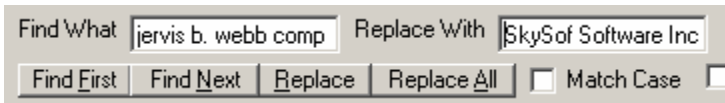
	Block	Layout	*Value	X	Y
▶	*PAPER_	Layout1	EM	23.95652	1.063181
	*PAPER_	Layout1	8/19/99	24.28509	1.063181
	*PAPER_	Layout1	REV. PER GANTRY LOCATION, RELOCATE DRIVE & TAKE-UP	24.98915	1.063181
	*PAPER_	Layout1	B	28.83801	1.063181
	*PAPER_	Layout1	REV. PER FIELD VISIT (8-23-99)	24.98915	1.313178
	*PAPER_	Layout1	8/25/99	24.28509	1.313178
	*PAPER_	Layout1	EM	23.95652	1.313178

Find What  Replace With  117

Because text in the Value field can sometimes be quite long there is a zoom window available which allows you to better view the text. Go to record 49, click in the Value field for this record, and press the F2 key to call the Zoom Screen.



Note that the Zoom Screen also allows finding and replacing text. You can also convert text to proper case, upper case, lower case, and undo all changes. There is also a button for spell checking (requires Word) and a button to change the text color. Go ahead and change some text then click the OK button to pop the data into the data grid. Click the Save button to save your changes. Now we will change the company name within the single line text for the drawing. To do this type **jervis b. webb company** in the Find What text box and type **SkySof Software Inc.** in the Replace With text box. Click the Replace All button to make the changes.



Go to records 50 and 52 to see the change. Click the Save button to save your changes.

	Block	Layout	*Value	X	Y
	D00005C	Layout1	CHECKED	23.3423E	0.653949
	D00005C	Layout1	BY	23.9223E	0.531762
	D00005C	Layout1	MY DRAWING INCLUDING THE DESIGN AND PRINCIPLES OF CO	29.0708E	4.185449
	D00005C	Layout1	PROPRIETARY MATERIAL OWNED BY SkySof Software Inc.. THIS	29.0708E	4.077180
	D00005C	Layout1	PURPOSE AGREED UPON AND IS NOT TO BE REPRODUCED NO	29.0708E	3.971003
	D00005C	Layout1	COMMUNICATED TO ANY THIRD PARTY, NOR USED IN ANY MAI	29.0708E	3.866758
	D00005C	Layout1	NOTICE	32.1290E	4.291183

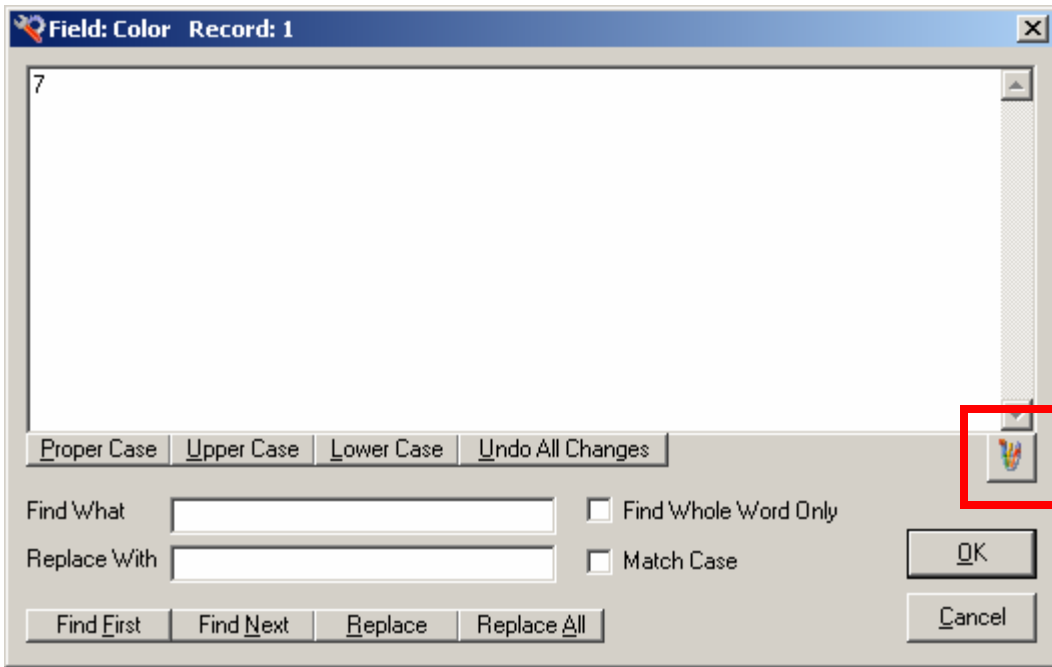
The drawing file ATTEXT.DWG provided does not contain any multiple line text objects therefore updating multiple line text is not covered in this tutorial. However, updating multiple line text is very similar to updating single line text.

#### 4. Updating layer values in an AutoCAD drawing file

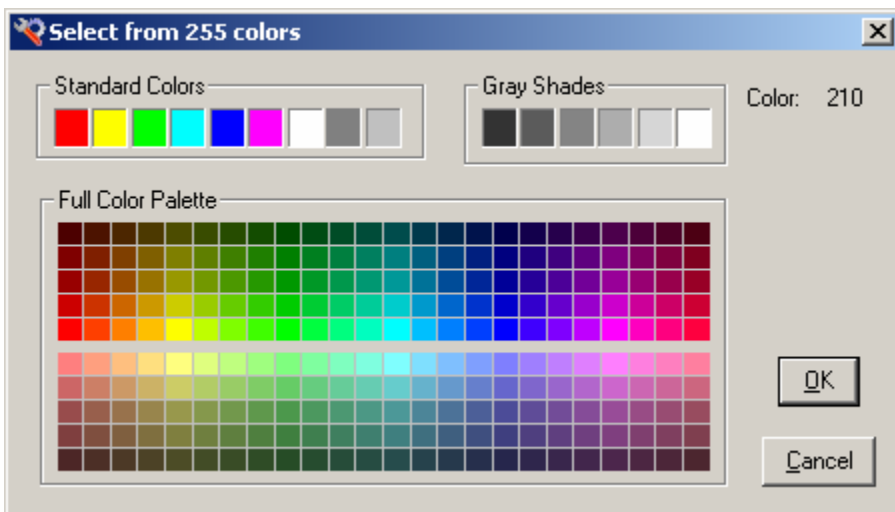
Select radio button “Layers” from the Drawing Information group box. You should see layer information in the data grid. Note fields Display and Color can be edited as indicated by the asterisk (\*) in the field name.

	Name	*Display	*Color
▶	0	On	7
	XF	On	106
	CL	On	252
	PL	On	32
	SH	On	10
	SL	On	211
	SM	On	110

The value for Display must be either On or Off. The value for Color (which is the layer color) must be a number between 1 and 255. To set the color for layer 0 click in field Color and press the F2 key to call the Zoom Screen. Click the button indicated by the red rectangle to call the Color Screen.



From the Color Screen you can select one of 255 available colors. Click on the color of your choice and click the OK button to pop the value into the text box on the Zoom Screen.



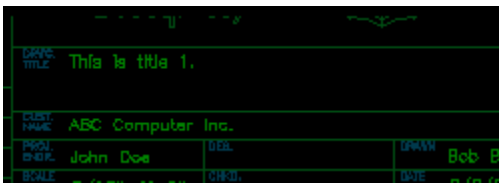
Click the OK button to close the Zoom Screen. You should see the new color number you selected in the data grid. Click the Save button to save your changes. Click drawing ATTEXT.DWG to reload the drawing. The layer color should now be whatever your selection was. With AutoCAD Drawing Viewer you can also change the color of single line text, multiple line text, and block attribute values.

## 5. Deleting objects in an AutoCAD drawing file

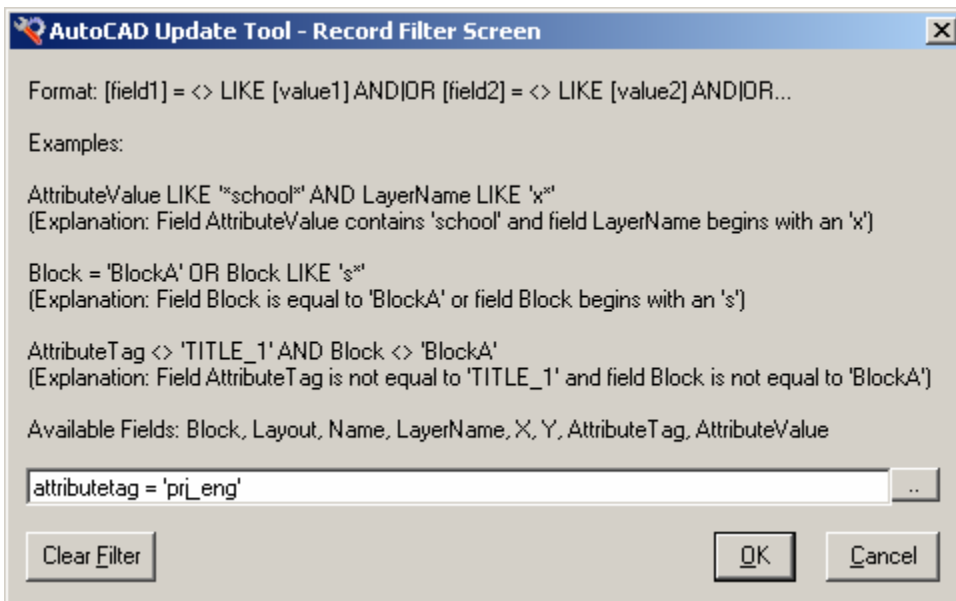
Select radio button “Block Attributes” from the Drawing Information group box. You should see block attribute information in the data grid. Next, select the entire record 2 by clicking in the square to the left of the record.

	Block	Layout	Name	LayerName	X	Y	AttributeTag	*AttributeValue
<input type="checkbox"/>	*MODEL	Model	D00005C	XT	662.33	761.5	TITLE_1	This is title 1.
<input checked="" type="checkbox"/>	*MODEL	Model	D00005C	XT	662.33	761.5	TITLE_2	This is title 2.
<input type="checkbox"/>	*MODEL	Model	D00005C	XT	662.33	761.5	CUSTOMER'S_NAME	ABC Computer Inc.
<input type="checkbox"/>	*MODEL	Model	D00005C	XT	662.33	761.5	PRJ_ENG	John Doe
<input type="checkbox"/>	*MODEL	Model	D00005C	XT	662.33	761.5	DRAWN_BY	Bob Brown

Now press the delete key. The record will disappear in the data grid. The block attribute object is not permanently removed from the drawing until you click the Save button. Go ahead and press the Save button to permanently remove this object. Click on the drawing again and notice that the block attribute no longer exists.



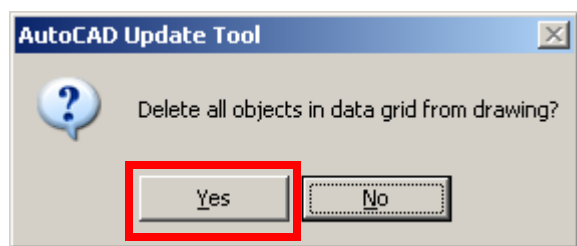
In the next example you will delete all block attribute objects that have an attribute tag name of PRJ\_ENG. First you must set a filter by pressing key F6 and typing **attributetag = 'prj\_eng'** then clicking the OK button to set the filter.



If the filter is set successfully you should see this message. Click the OK button to close the window.



At this point there should be 4 records in the data grid. To delete these records press the Delete All button and click the Yes button to continue.



Click the Save button to save your changes. Reload the drawing and notice that block attribute objects no longer exist.

## 6. Batch processing multiple drawings

AutoCAD Drawing Viewer is not capable of processing more than one drawing at a time. However, we have a tool named Ultra AutoCAD Tool which allows you to easily update multiple drawings by simply clicking a few buttons! Ultra AutoCAD Tool is an ultra-fast utility program for AutoCAD drawing files. Features include: extract data from drawing files (CSV,XML,HTML) and import to a database or Excel workbook, create DXFs from DWGs, find and replace text, find and replace block attribute values, find and delete text objects, find and delete block attribute objects, find and delete block objects, set layer status (on/off/thawed/frozen), save drawings as older version, find and replace image paths, find and replace external reference paths, etc. Ultra AutoCAD Tool does not require AutoCAD to be installed on your machine and is compatible with all AutoCAD drawing versions. Download it now from [http://www.download.com/Ultra-AutoCAD-Tool/3000-18496\\_4-10498322.html](http://www.download.com/Ultra-AutoCAD-Tool/3000-18496_4-10498322.html)